

TECHNICAL DATA SHEET



KRASO® Cable Penetration KDS 150 – double wall penetration

Application areas

For the installation in waterproof concrete walls and later installation of media lines using **KRASO®** System Sealing Insert KDS 150 or for connecting of empty conduits using **KRASO®** System Cover. Forming packages possible

Material

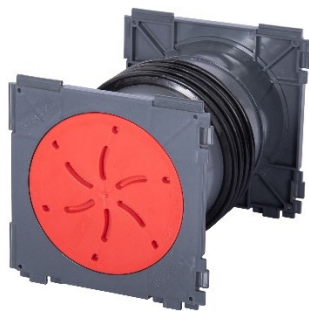
frame	PVC
pipe	PVC
4 seal	PVC
closure cover	ABS

Tests

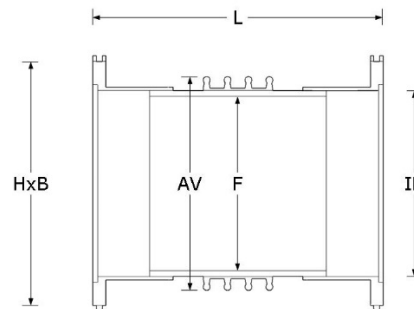
- Radon tight: Protects against a hazardous concentration of radioactive noble gas
- Made of shape- and pressure-resistant solid wall material with low abrasion! Installation possible even at low temperatures.
- Temperature resistance up to 60 °C.
- MPA tested up to 3.5 bar.
- Gas and odour-tight - High quality in accordance with the TA-Air.

Certificates [Find in our download area](#)

Product Image



Technical Drawing



Dimensions

L	15	17,5	20	24	25	30	35	36,5	40	45	50
HxB	210	210	210	210	210	210	210	210	210	210	210
AV	188	188	188	188	188	188	188	188	188	188	188
F	150	150	150	150	150	150	150	150	150	150	150
Material thickness	5,0	5,0	5,0	5,0	5,0	5,0	5,0	5,0	5,0	5,0	5,0
IB	160	160	160	160	160	160	160	160	160	160	160
Weight	1,0	1,2	1,3	1,5	1,5	1,6	1,7	1,7	1,8	2,0	2,0
Artikel-No.	KKDS150 150B	KKDS150 175B	KKDS150 200B	KKDS150 240B	KKDS150 250B	KKDS150 300B	KKDS150 350B	KKDS150 365B	KKDS150 400B	KKDS150 450B	KKDS150 500B

L | wall thicknesses (cm) • HxB | outer frame dimension (mm) • AV | Ø 4 Seal outside (mm) • F | Ø casing inside (mm) • IB | Ø bayonet fitting inside (mm)
 • material thickness | in mm • weight | in kg