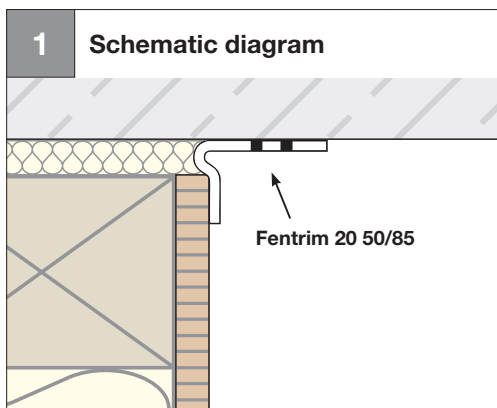




Wall: Solid construction *Airtight on the inside*

Joining timber to solid wall construction – non-plastered masonry or concrete



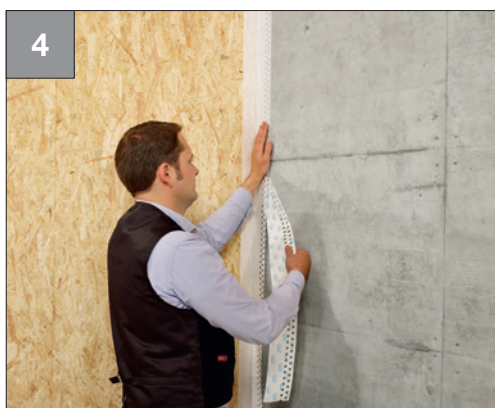
- Joining timber wall construction to **non-plastered** masonry or concrete



- Affix 50 mm side to wood-based panel

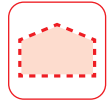


- Unfold Fentrim 20 50/85
- Press on firmly



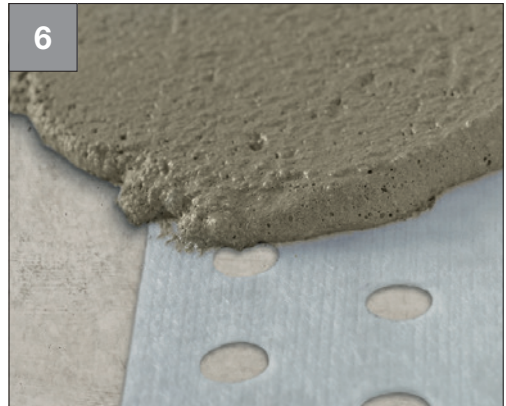
- Remove backing strip
- Fixing
- Apply free from stress and tension
- Press on firmly

Wall: Solid construction *Airtight on the inside*



How it should look:

- Timber wall construction joined to non-plastered masonry or concrete



Note:

- If Fentrim 20 50/85 is mounted on **non-plastered** masonry it must be plastered over to form the airtight layer
- The width of the substrate to be plastered covered by Fentrim must not exceed 60 mm without counting the Fentrim perforated zone.



Fentrim® 20 50/85

P. 140