

Wall: Timber construction *Airtight on the inside*

Joining window to timber wall construction



- Cut off a short piece, unfold
- Make a 12 mm cut in the centre of one side



- Fold over at a 90° angle
- Bond together
- Make a corner crease

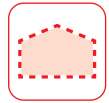


- Remove backing strip



- Press into inside corner
- Affix 12 mm side of Corvum to window frame
- Repeat in each inside corner

Wall: Timber construction *Airtight on the inside*



- Then connect the inside corners:
- Affix 12 mm side of Corvum to window frame
- Measure and cut to the correct length



- Remove backing strip
- Unfold
- Press on
- Repeat on each side



How it should look:

- Recessed window frame airtightly bonded with Corvum 12/48
- Corvum is invisible behind cladding



Corvum® 12/48

P. 125

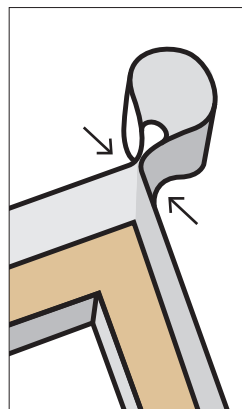


Wall: Timber construction *Airtight on the inside*

Joining window to timber wall construction alternative:



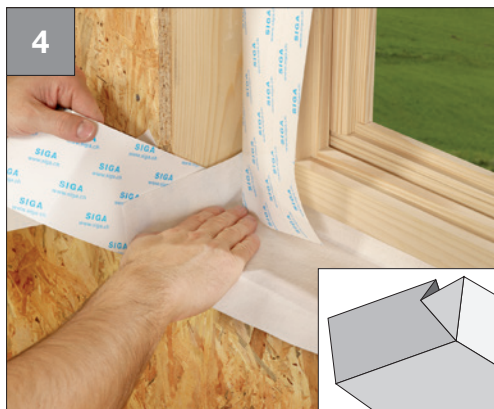
- Bond to windowsill joint profile **at the bottom**
- Projecting by joint width plus approx. 6 cm on both sides
- Press on firmly



- Bond laterally to the frame
 - Press on firmly
- Top corners:**
- Form a loop: 1.5 x joint width
 - Bond or press together firmly
 - Repeat on the other side

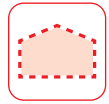


- Install the window



- Form trough

Wall: Timber construction *Airtight on the inside*



- Cut into the corners
- Remove backing strip and press on firmly



- Repeat on each side



How it should look:

- Window frame joined airtight to timber wall construction



Fentrim® IS 20

P. 144