

JOB APPLICATION to the electrical trade.

*I'm the one you've
always waited for!*



The basis for good installation

 **KAISER**

Hello! Here I am, **KAISER's electronics box ECON® Flex**. As the newest box in my family I'm sending a job application to the entire electrical trade. That's because I have a range of abilities which you should know about.

I'm convinced that I can make things go quicker and faster with me. What's more, I can deal with the situations which have been difficult for you in the past.



I'm the only cavity wall box which increases its size after installation through a 68 mm opening!



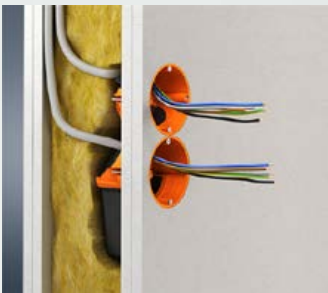
Product video

Here's what I can offer you

- I answer to the name of **Electronics box ECON® Flex**.
- I'm thin during installation, and afterwards I'm twice as big.
- I keep things tight. Take my word for it!
- I'm a genuine brand name product.
- My father invented the cavity wall box.
- My family stands right behind me - with 114 years of experience.

Examples of my work

Your work can look like this when you make use of me!



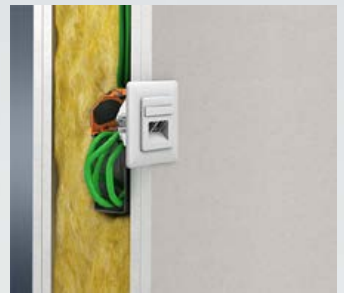
Combination with ECON® cavity wall boxes is possible.



Additional space for connection terminals.



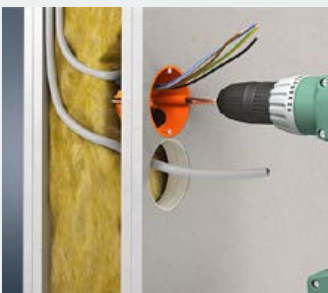
Accepts electronic components e.g. actuators.



Space for cable reserves.

My special strengths

I can do more.



Existing Ø 68 mm installation openings can be used.



Air-tight and fully-insulated combination by means of support connectors Art. No. 9060-98.



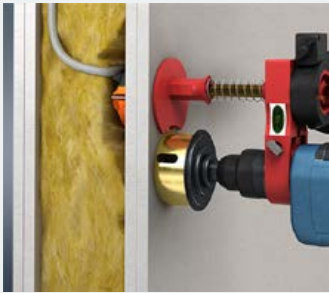
Standardised cable retention. Elastic sealing membrane permits toolless cable entry...



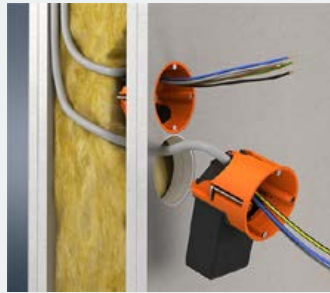
... and conduit entries up to M25 in an airtight version.

Working practice

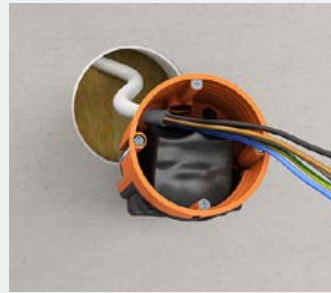
If you use me the way you see here, we will become a great team.



Create Ø 68 mm installation opening; for refurbishing, centre distance 71 mm, using Profix.



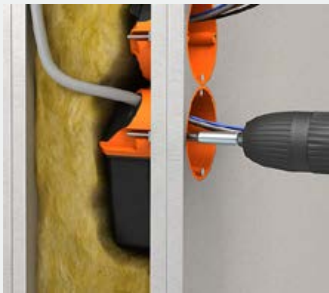
Feed cable or conduit air-tight through the elastic sealing membrane.



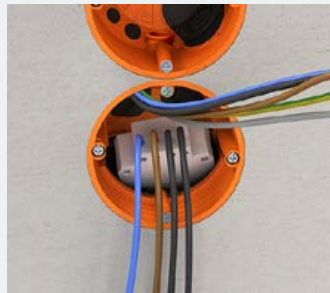
For easy installation, fold in the elastic tunnel.



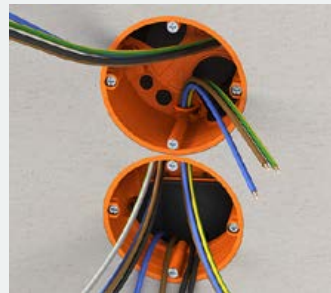
Insert the box into the component opening.



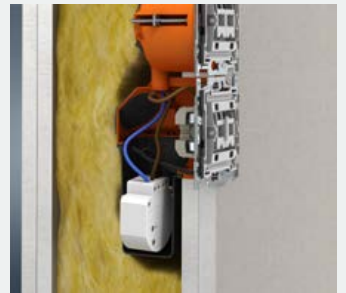
Tighten box lug screws and fold out the tunnel.



Insert electronic component into the tunnel.



Through-wiring takes place by means of support connectors Art. No. 9060-98.

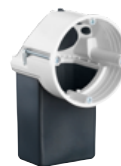


Guaranteed air-tight - secure terminal compartment for electronic components.

Hidden qualities

Electronics box ECON® Flex

- for accessories and electronic components
- Air-tight design with sealing membranes
- Elastic tunnel
- Combinable with ECON® one-gang junction boxes



AIR-TIGHT

For panel thickness	7 - 30 mm	7 - 30 mm
Length x Width x Depth	122 x 71 x 75 mm	122 x 71 x 75 mm
Cut hole Ø	68 mm	68 mm
Device screws	2	2
Cable entries 3 x 2.5 mm ² or 5 x 1.5 mm ²	2	2
Cable entries of up to Ø 11.5 mm	2	2
Halogen-free	-	•
Air-tight	•	•
Tube entries up to M25	2	2
/	• / •	• / •
Art. No.	9268-94	9268-74

KAISER GmbH & Co. KG

Ramsloh 4 · 58579 Schalksmühle
GERMANY

Tel. +49(0)2355.809.0 · Fax+49(0)2355.809.21
www.kaiser-elektro.de · info@kaiser-elektro.de

