



Wall: Solid construction *Airtight on the inside*

Joining vapour control layer to solid wall construction - plastered masonry

- 1** Apply bead before mounting the vapour control layer



- 2** Apply bead after mounting the vapour control layer



or

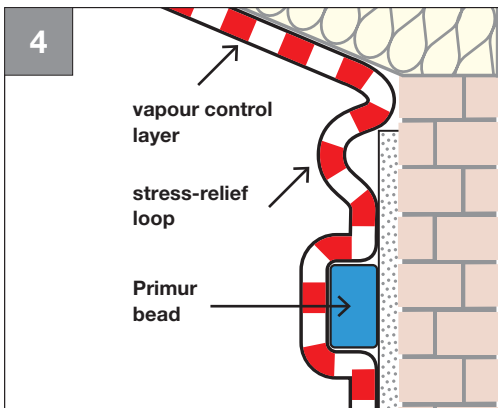
- Clean the substrate
- Apply Primur, align and press it down
- Cut with a knife and press on

3



- Remove backing strip

4

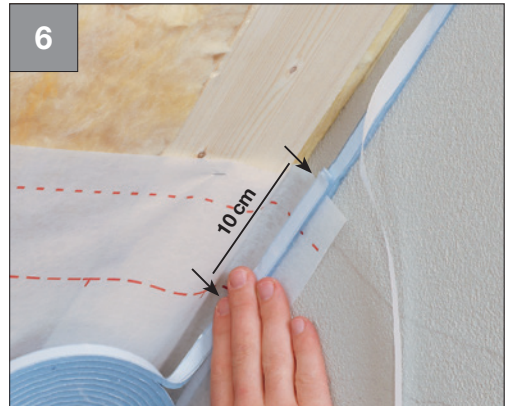


- Make a stress-relief loop in the vapour control layer

Wall: Solid construction *Airtight on the inside*



- Press vapour control layer firmly onto Primur bead free from creases and tension

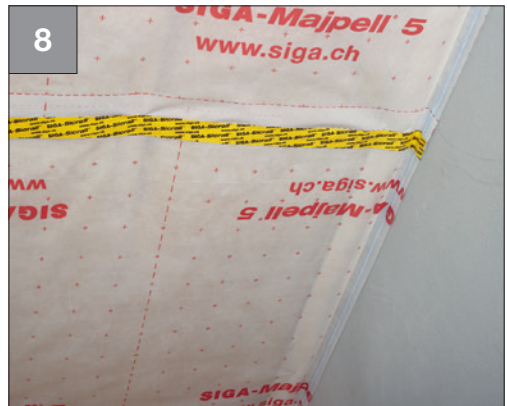


For overlaps:

- Apply a short bead of Primur (about 10 cm) to vapour control layer at the overlap



- Mount second membrane, press it on



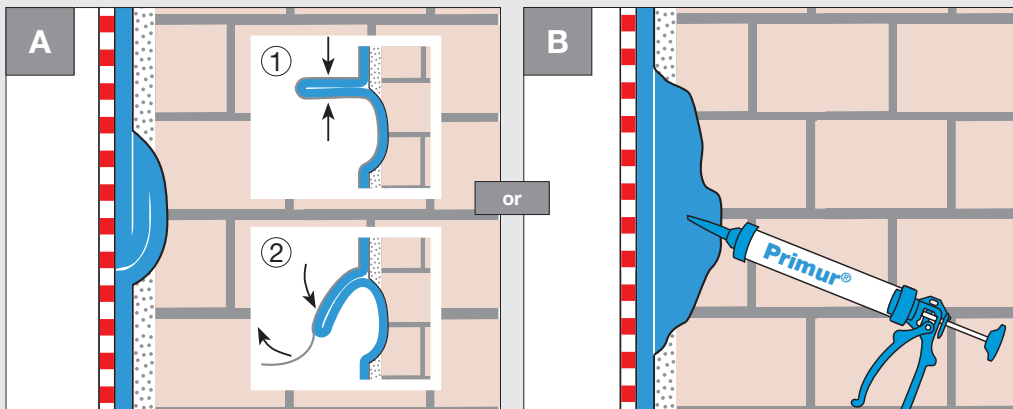
How it should look:

- Vapour control layer is airtightly sealed against plastered masonry with Primur roll



Wall: Solid construction *Airtight on the inside*

Tips and tricks



For unevenness

- Make a loop in the bead ① and fill unevenness airtightly ②

- Apply Primur roll
- Then fill the unevenness airtightly using the Primur tubular bag



Primur® roll

P. 123

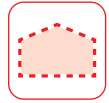
Majrex® 200

P. 115

Majpell® 5

P. 116

Wall: Solid construction *Airtight on the inside*



Joining vapour control layer to solid wall construction - plastered masonry



or

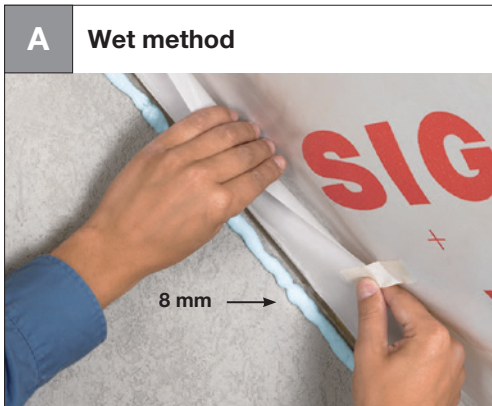


Apply Primur compound using the SIGA tubular bag applicator gun

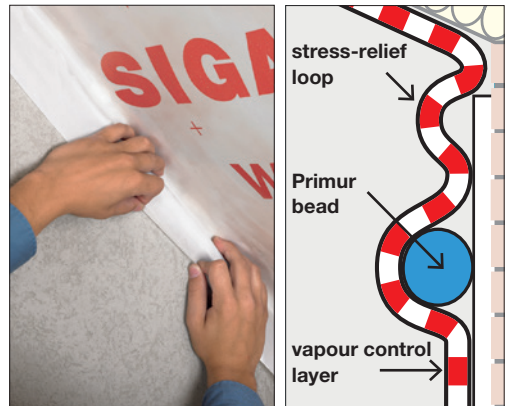
- Twin-spiked nozzle opens Primur bag
- Transparent tube shows fill level

Apply Primur compound using the SIGA cartridge applicator gun

- Sturdy applicator gun with long-lasting professional quality
- With drip stop – hands and gun remain clean



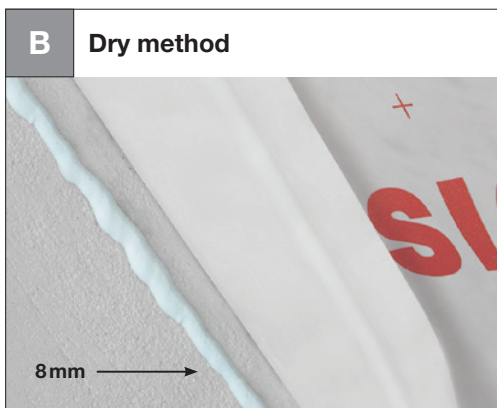
- Apply an 8 mm Primur bead
- Release secured vapour control layer immediately



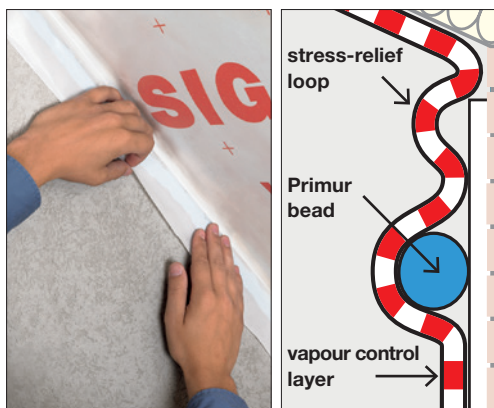
- Make a stress-relief loop in the vapour control layer
- Gently press vapour control layer onto Primur bead – **do not press flat!**
- Primur bead must remain at least 4 mm thick



Wall: Solid construction *Airtight on the inside*



- Apply an 8 mm Primur bead and **allow it to dry** for 1 to 3 days



- Make a stress-relief loop in the vapour control layer
- Press vapour control layer **firmly** onto the Primur bead without tension or wrinkles



Primur® cartridge

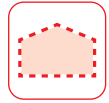
P. 122



Primur® tubular bag

P. 122

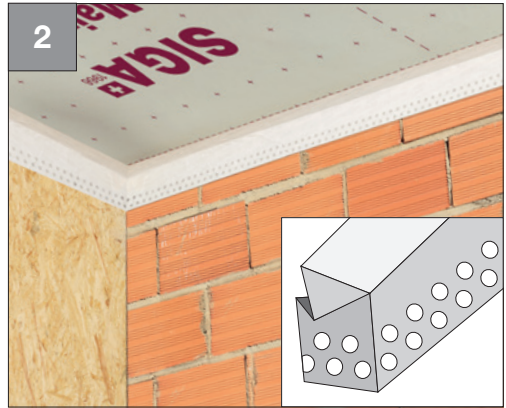
Wall: Solid construction *Airtight on the inside*



Joining vapour control layer to solid wall construction – non-plastered masonry or concrete



- Affix 50 mm side to vapour control layer
- Affix perforated 85 mm side to solid wall construction
- Apply free from stress and tension
- Press on firmly



Note:

- If Fentrim 20 50/85 is mounted on **non-plastered** masonry it must be plastered over to form the airtight layer
- The width of the substrate to be plastered covered by Fentrim must not exceed 60 mm without counting the Fentrim perforated zone.



Fentrim[®] 20 50/85

P. 140